

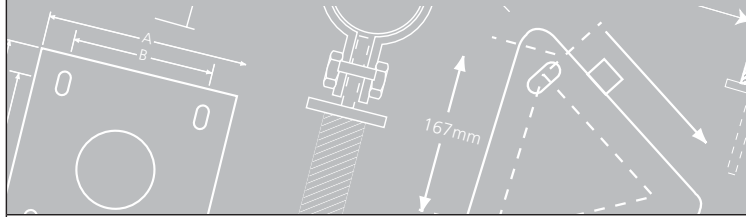


PIGGOTTS

Est. 1780

Innovation through tradition

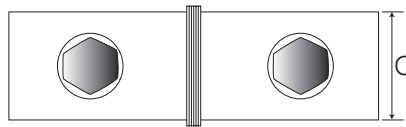
TECHNICAL SPECIFICATION SHEET



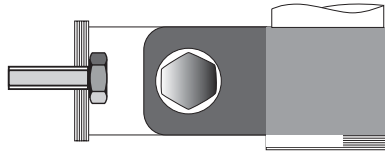
Head Office:
 London Road, Stanford Rivers,
 Ongar, Essex CM5 9PJ
 Tel: 01277 363262
 Fax: 01277 365162

10 - UHT BRACKETS

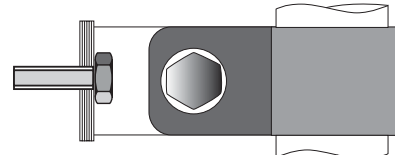
E-mail: sales@piggotts.co.uk
 Website: www.piggotts.co.uk



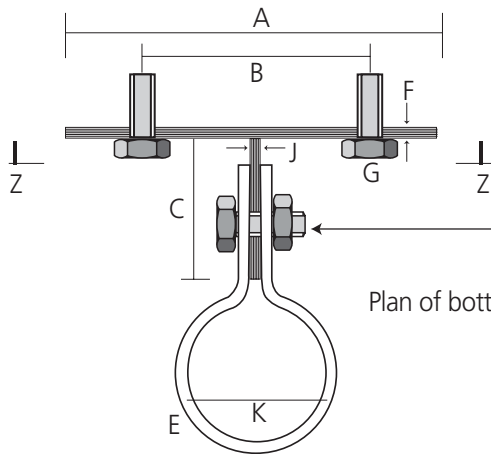
Elevation at ZZ Bottom bracket



Side Elevation. Bottom bracket



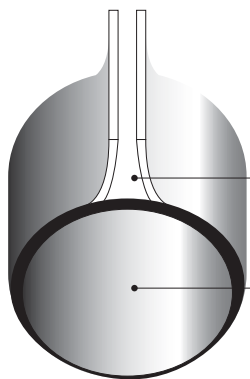
Side Elevation. Top bracket



Plan of bottom bracket (N.T.S.)

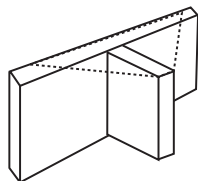
G - "Fixing Bolts" M12 dia in M16 holes can vary to site conditions and circumstances, but would be:- through bolts, rawl bolts, sleeved through bolts or resin grout.

Bolt size: up to 8mm M16 dia



For draining & allowance for closing the bracket

Plate 1/3 welded on lower bracket for alloy & fibreglass mast



For extra outstand or reinforcing if this is required then a triangular strengthening plate can be welded on back plate and outstand bracket.

STANDARD											
F/S	BUTT DIA	A	B	C	D	E	F	G	H	J	K
3m	100	230	150	90	=	5	5	16	75	8	^
4	100	230	150	90	=	5	5	16	75	8	^
5	115	230	150	90	=	5	5	16	75	8	^
6	115	230	150	90	=	5	5	16	75	10	^
7	135	230	150	90	=	5	10	16	75	10	^
8	145	300	230	100	=	5	10	16	75	10	^

=	OD OF BOTTOM BRACKET
^	DEPENDENT ON DISTANCE FROM THE LOWER BRACKET